

POINT VILLA | 7,024 SQUARE FEET, 5 BEDROOM, 5 FULL AND 2 HALF BATHROOM

MAIN LEVEL FLOOR PLAN

Total SQ Footage	7,024 SF
Main Level	3,914 SF
Upper Level	3,110 SF
Bedrooms	5
Bathrooms	5 Full, 2 Half



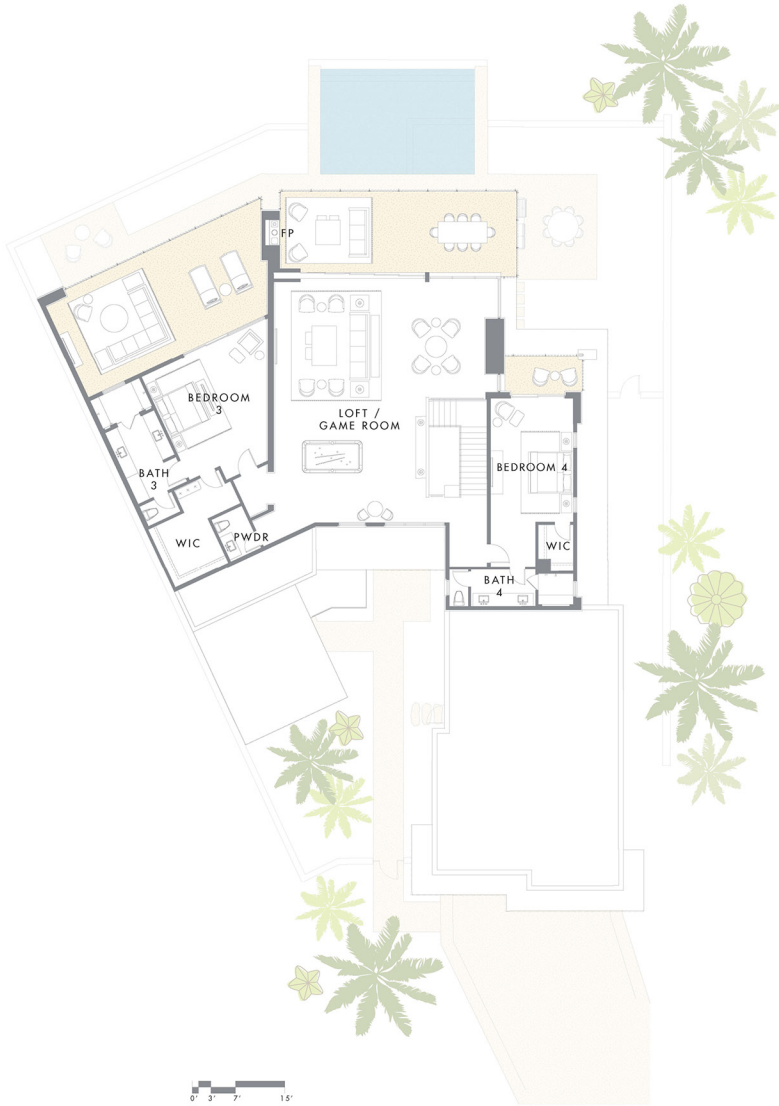
This is a standard representation; some units will have a mirrored plan and/or detached garage due to homesite configuration. Patio areas with dotted lines denote overhead covering. Room and patio dimensions and total square footage are for general reference, sizes will be specific to each unit and subject to change.



**POINT VILLA | 7,024 SQUARE FEET, 5 BEDROOM, 5 FULL AND 2 HALF BATHROOM**

**UPPER LEVEL FLOOR PLAN**

<b>Total SQ Footage</b>	7,024 SF
<b>Main Level</b>	3,914 SF
<b>Upper Level</b>	3,110 SF
<b>Bedrooms</b>	5
<b>Bathrooms</b>	5 Full, 2 Half



This is a standard representation; some units will have a mirrored plan and/or detached garage due to homesite configuration. Patio areas with dotted lines denote overhead covering. Room and patio dimensions and total square footage are for general reference, sizes will be specific to each unit and subject to change.

