

GOLF COTTAGE | 3,720 SQUARE FEET, 4 BEDROOM

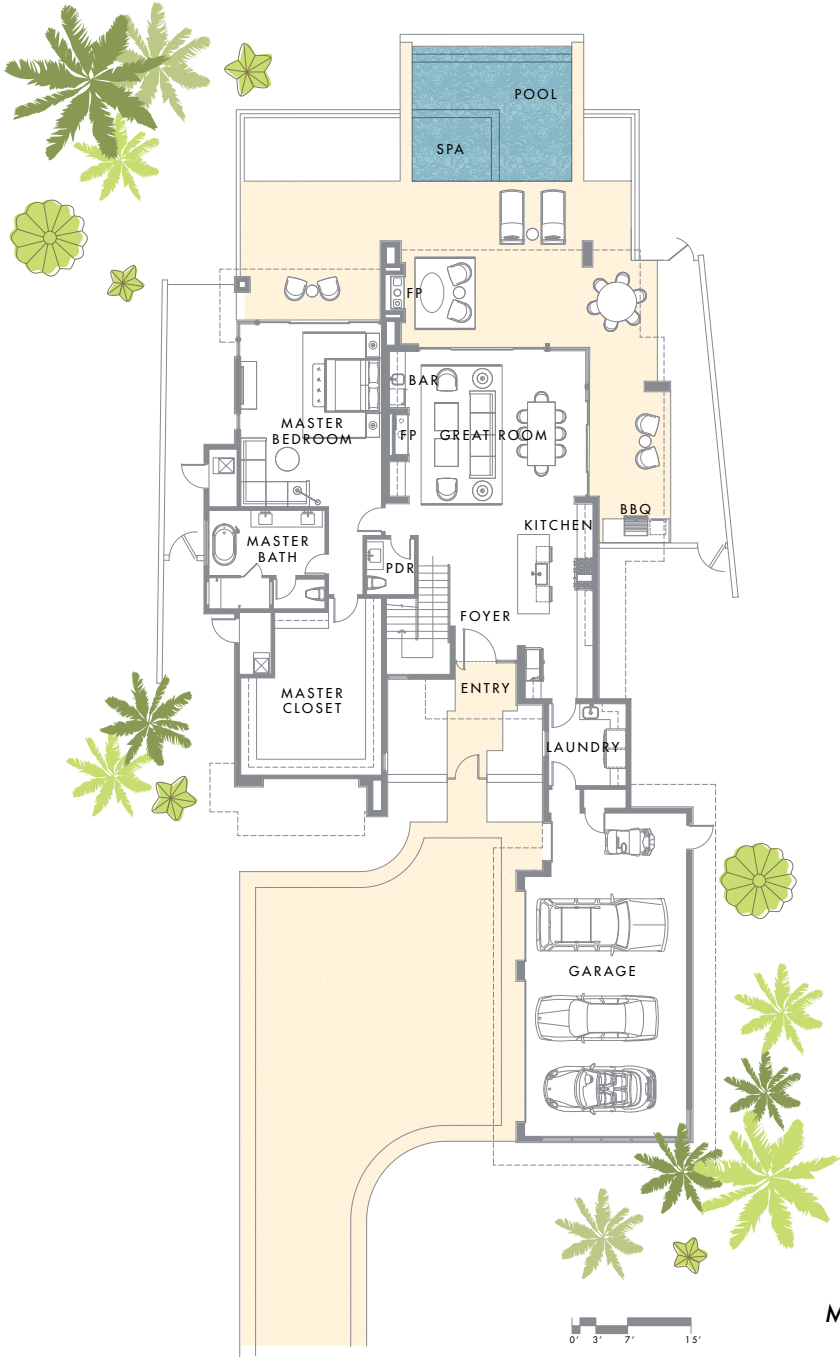


The two-story, four-bedroom 3,720-square-foot Golf Cottage combines privacy and ease of entertaining indoors and out, with a large master suite on the main level, a great room open to the upper story, and a spacious covered patio with an outdoor fireplace and a lounge area by the pool and spa. Private guest quarters occupy the upper level, where two of the three bedrooms include private patios.



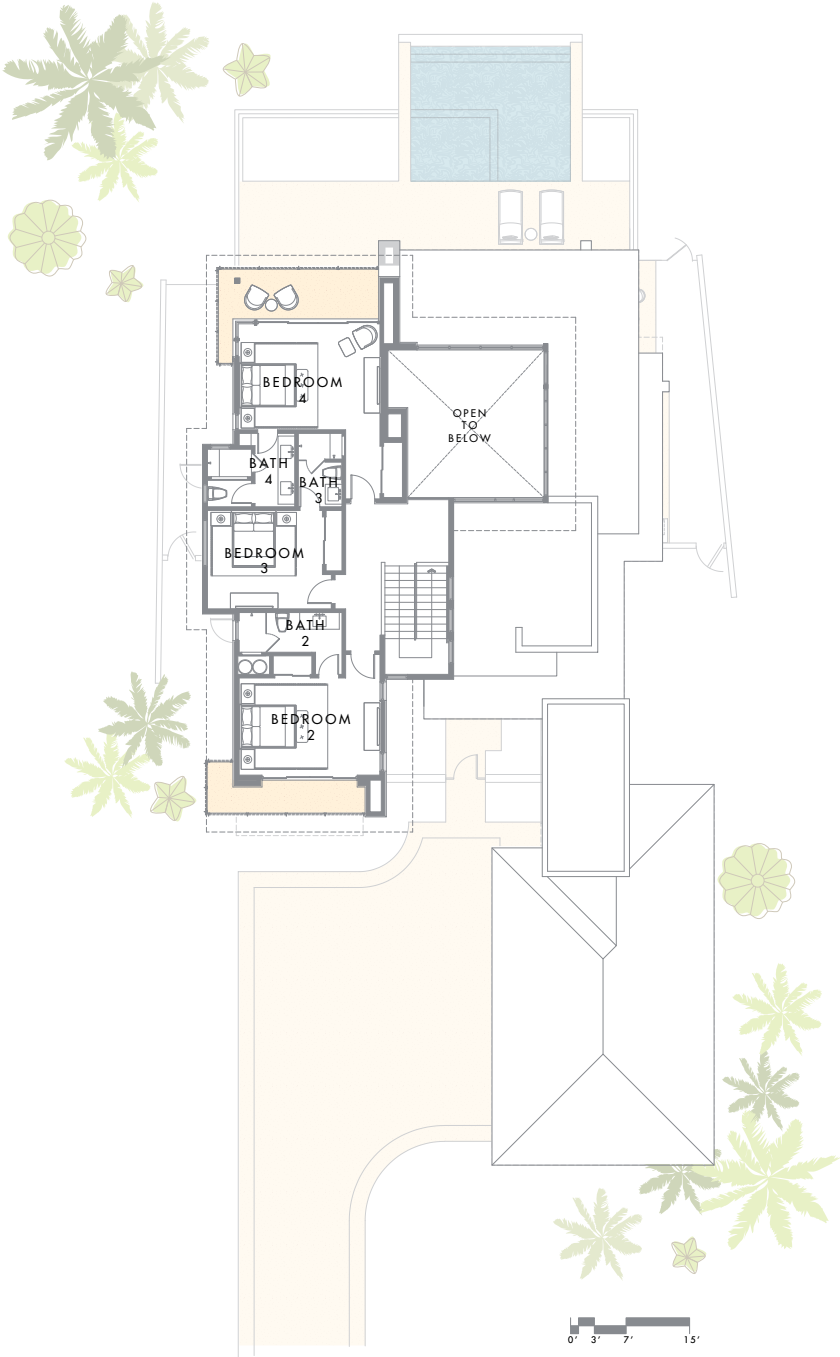
FLOOR PLAN

Total SQ Footage	3,720 SF
Main Level	2,440 SF
Upper Level	1,280 SF
Bedrooms	4
Bathrooms	4.5



MAIN LEVEL

This is a standard representation; some units will have a mirrored plan due to homesite configuration. Room and patio dimensions and total square footage are for general reference, sizes will be specific to each unit and subject to change.



UPPER LEVEL



CONTACT

T +1.702.970.2150

E info@summitclubnv.com

THE SUMMIT CLUB

10775 Summit Club Drive

Las Vegas, NV 89135



These materials, square footage, features and amenities described and depicted herein are based upon current development plans, which are subject to change without notice. Renderings reflect sample fixtures and finishes, which can be personalized for final construction; inquire with your sales representative for more information. Obtain the property report required by applicable government authorities before signing anything. No governmental agency has judged the merits or value, if any, of this property. This material shall not constitute an offer to sell in any state where prior registration is required.

August/19

THE SUMMIT CLUB