

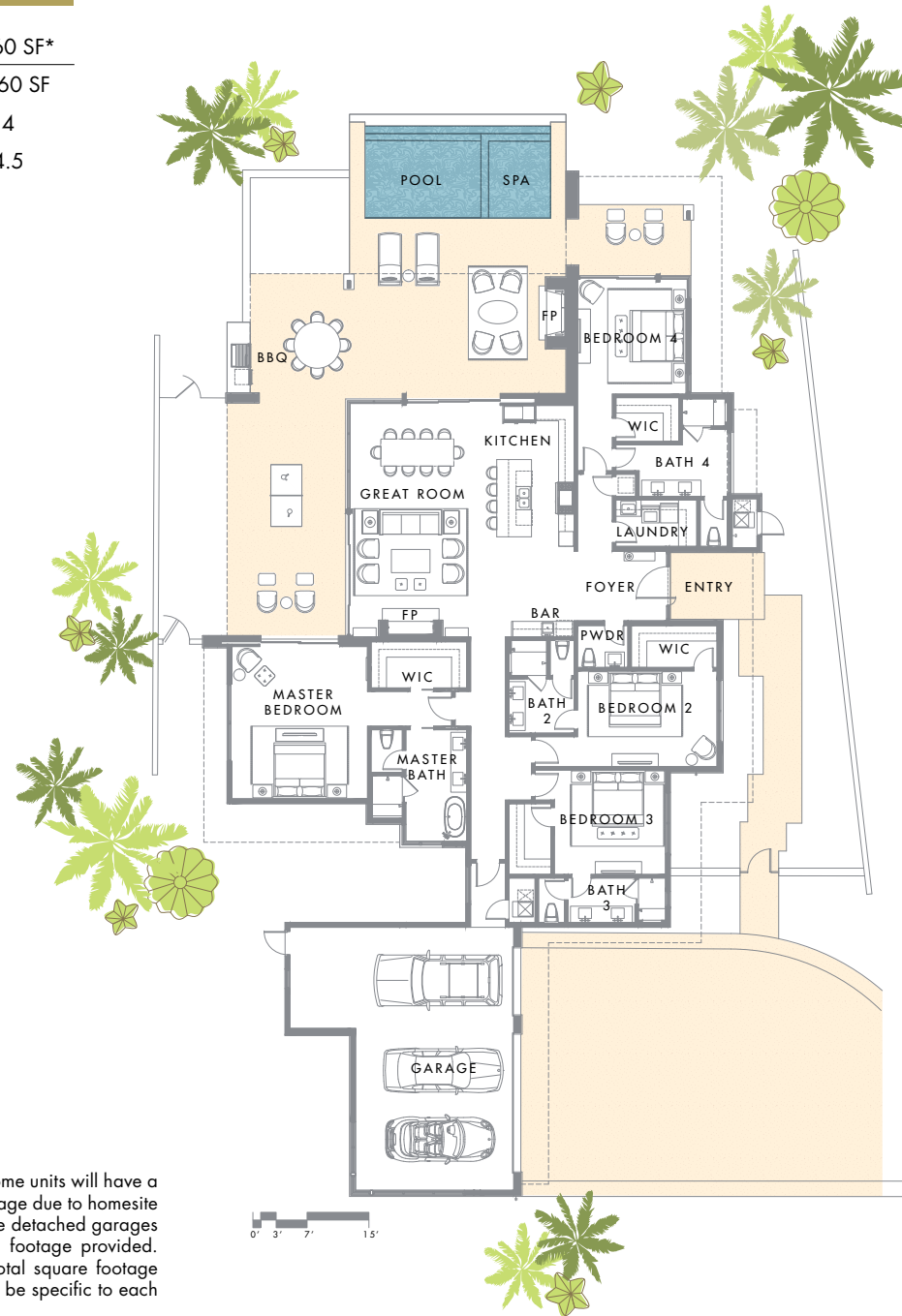
DESERT BUNGALOW | 3,660 SQUARE FEET, 4 BEDROOM

A family on the go will appreciate the single-story floor plan of the 3,660-square-foot Desert Bungalow. The four bedrooms and four and a half baths are centered on a great room designed for entertaining, while the generous covered patio accentuates The Summit Club's indoor-outdoor lifestyle. This is the place to host a festive barbecue or lounge by the pool and spa.



FLOOR PLAN

Total SQ Footage	3,660 SF*
Main Level	3,660 SF
Bedrooms	4
Bathrooms	4.5



This is a standard representation; some units will have a mirrored plan and/or detached garage due to homesite configuration. When applicable, the detached garages are included in the overall square footage provided. Room and patio dimensions and total square footage are for general reference, sizes will be specific to each unit and subject to change.

MAIN LEVEL





CONTACT

T +1.702.970.2150

E info@summitclubnv.com

THE SUMMIT CLUB

10775 Summit Club Drive

Las Vegas, NV 89135



These materials, square footage, features and amenities described and depicted herein are based upon current development plans, which are subject to change without notice. Renderings reflect sample fixtures and finishes, which can be personalized for final construction; inquire with your sales representative for more information. Obtain the property report required by applicable government authorities before signing anything. No governmental agency has judged the merits or value, if any, of this property. This material shall not constitute an offer to sell in any state where prior registration is required.

August/19

THE SUMMIT CLUB