

CLUB VILLA | 5,650 SQUARE FEET, 5 BEDROOM

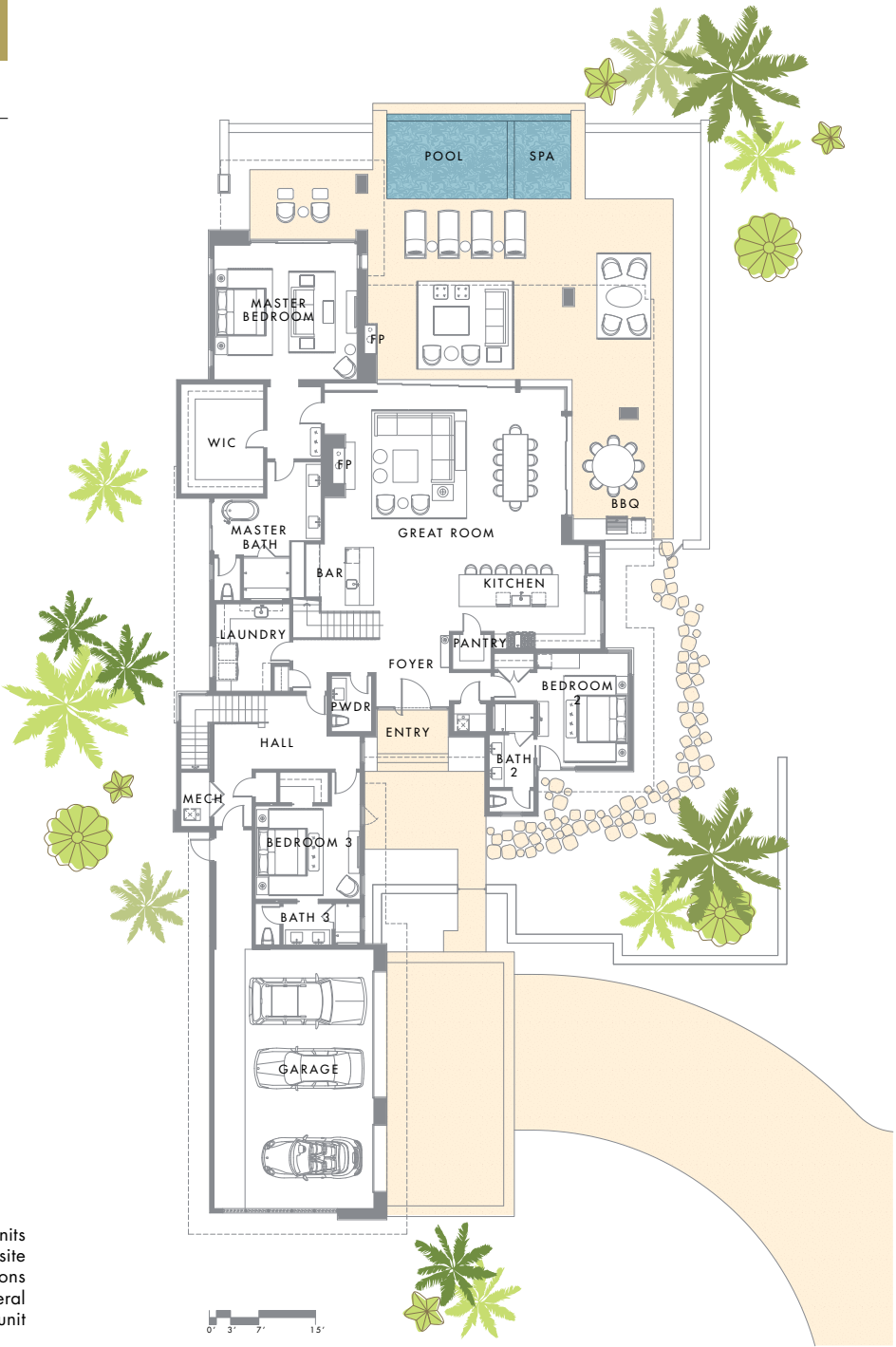


With five bedrooms—including one with private access—the capacious two-story Club Villa is perfect for a multi-generational family or a vacation retreat. The 5,650-square-foot residence includes an extensive patio with dining and lounging areas as well as a pool and spa. At the heart of the home is the great room, with a ceiling that rises to the upper story. This is a place to truly enjoy The Summit Club's indoor-outdoor lifestyle.



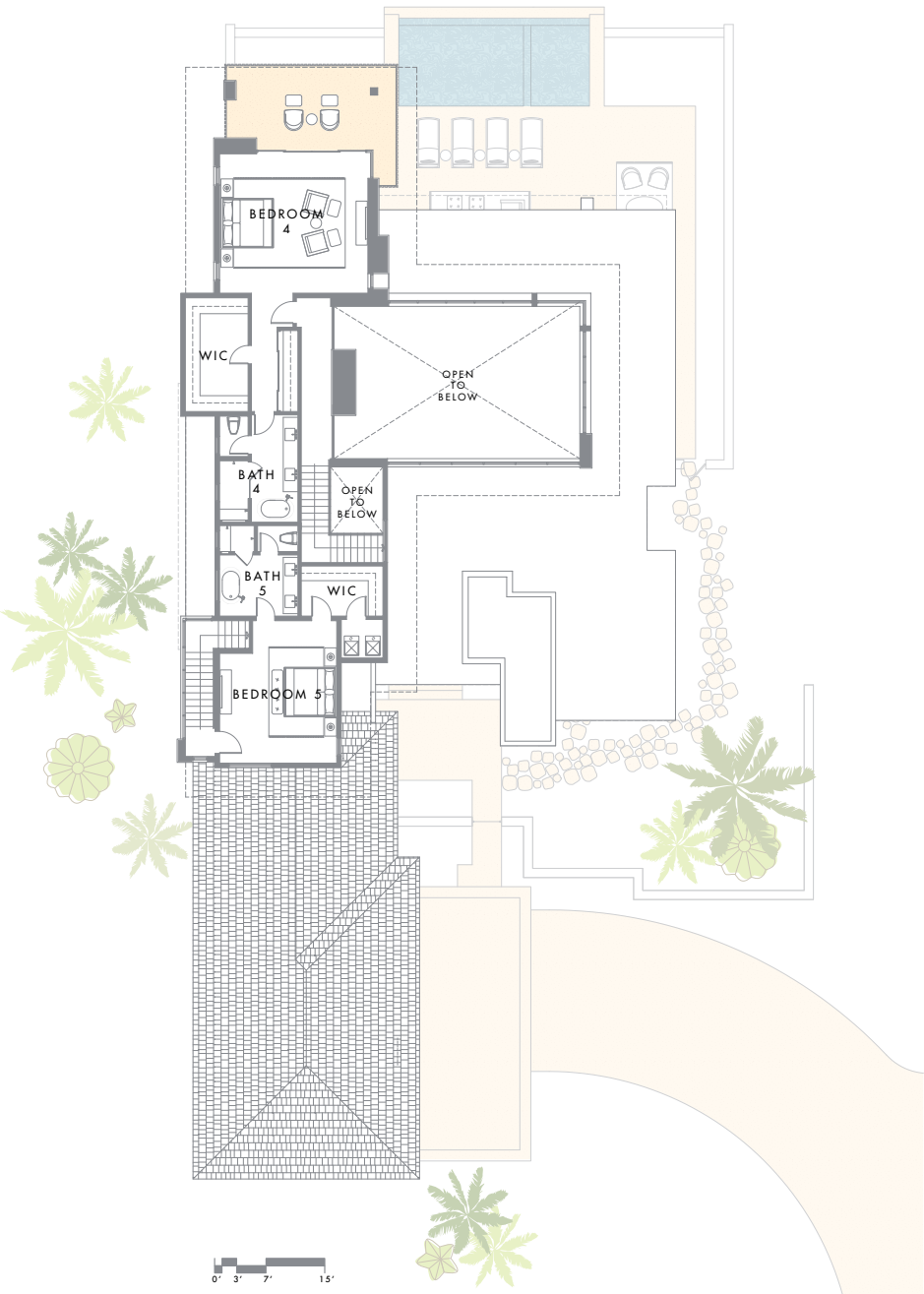
FLOOR PLAN

Total SQ Footage	5,650 SF
Main Level	4,015 SF
Upper Level	1,635 SF
Bedrooms	5
Bathrooms	5.5



MAIN LEVEL

This is a standard representation; some units will have a mirrored plan due to homesite configuration. Room and patio dimensions and total square footage are for general reference, sizes will be specific to each unit and subject to change.



UPPER LEVEL



CONTACT

T +1.702.970.2150

E info@summitclubnv.com

THE SUMMIT CLUB

10775 Summit Club Drive

Las Vegas, NV 89135



These materials, square footage, features and amenities described and depicted herein are based upon current development plans, which are subject to change without notice. Renderings reflect sample fixtures and finishes, which can be personalized for final construction; inquire with your sales representative for more information. Obtain the property report required by applicable government authorities before signing anything. No governmental agency has judged the merits or value, if any, of this property. This material shall not constitute an offer to sell in any state where prior registration is required.

August/19

THE SUMMIT CLUB