

ESTATE  
LOT 86





# AT A GLANCE

Set between the striking desert landscape of Nevada’s Red Rock Canyon and the glow of the Las Vegas Strip, The Summit Club is a distinctive, secure, luxury neighborhood in a class of its own. Located on 555 scenic and pristine acres in the heart of Summerlin, the community offers unparalleled real estate opportunities, a members-only Tom Fazio-designed championship golf course, an expansive clubhouse, and unfettered access to a stunning desert paradise. Sophisticated yet casual, private yet close to world-class dining and shopping, The Summit sets a new standard in luxury living.

## THE COMMUNITY

- 150 Custom Homesites
- 95 high-end developer residences built by Discovery Builders
- 24-hour guard-gated entrance
- Minutes from the Las Vegas Strip and Red Rock Canyon Conservation Area

## AMENITIES

- Tennis facility
- Basketball and Pickleball Courts
- On-Site Walking Trails
- Concierge Member Services
- The Clubhouse will be the center of life at The Summit, featuring a resort-style pool, full-service spa, salon and barbershop, kids’ club and activity center, luxury indoor and outdoor dining, and so much more. Slated to open in 2022.

## GOLF

- The 18-hole Tom Fazio-designed championship golf course is the only truly private course in Las Vegas.
- Home to several of Discovery Land Company’s signature Comfort Stations
- Practice Facilities located steps away from the Golf House, a full-service culinary facility and member lounge

## OUTDOOR PURSUITS

Discovery Land Company’s bespoke lifestyle and recreation concierge program offers a selection of adventures in the great outdoors. The Summit Club offers prime access to Red Rock Canyon, Lake Mead and more of Southern Nevada’s natural amenities.



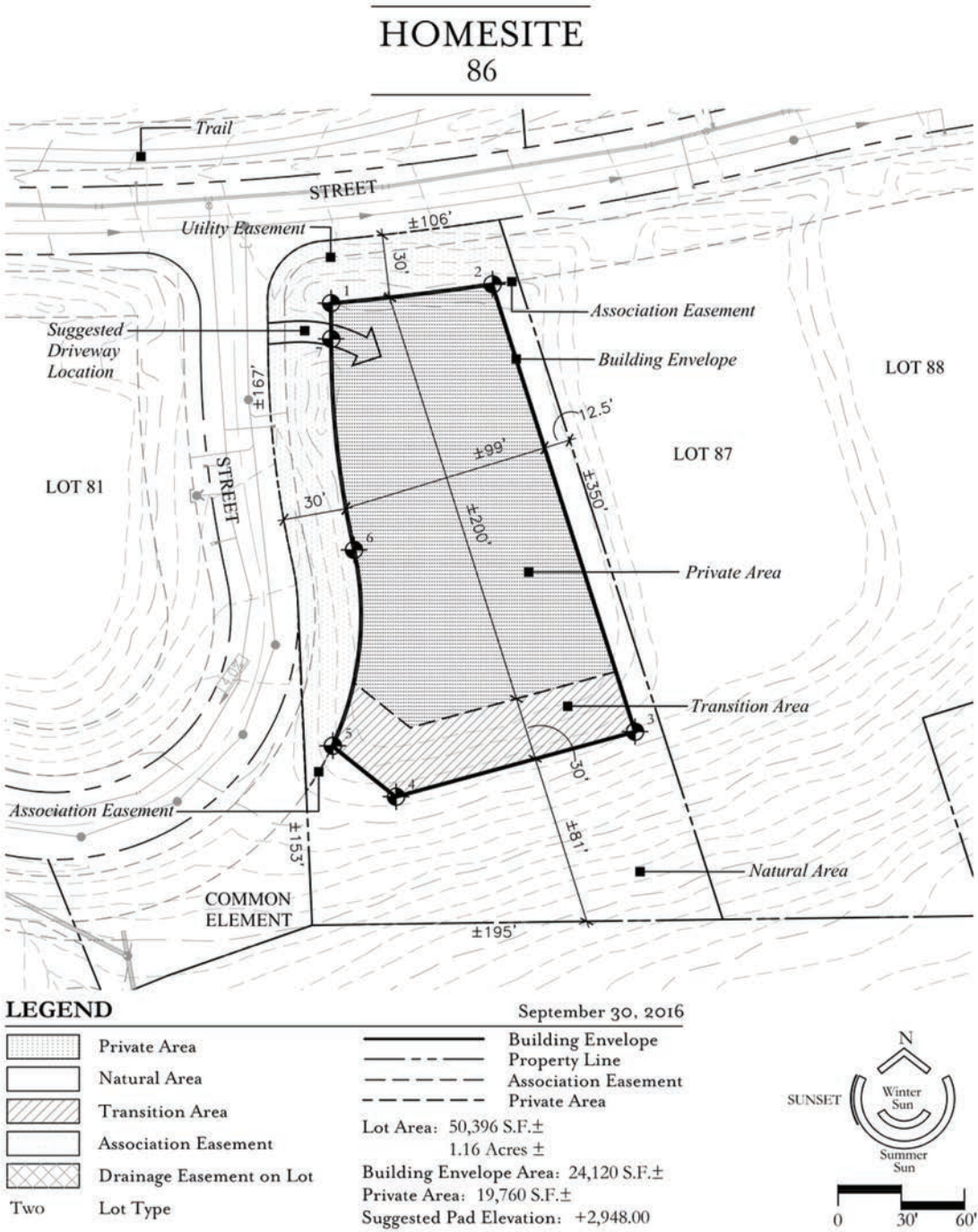


## A PLACE TO CALL HOME

Spectacular Lot 86 features stunning views of the golf course. The secluded 1.16-acre lot features a generous building envelope for your dream home.













THE SUMMIT CLUB  
11750 SUMMIT CLUB DR  
LAS VEGAS, NV 89135  
SUMMITCLUBNV.COM  
TEL (702) 970-2150



The materials, features, and amenities described and depicted herein are based upon current development plans, which are subject to change without notice. This development plan is not a legal or sales document and is intended to show only general relationships. It may be revised from time to time. Refer to plots, legal descriptions and CC&Rs for actual lot sizes and restrictions. No guarantee is made that the features and amenities depicted by artist's renderings or otherwise described will be built, or if built, will be the same size or nature as depicted or described. Obtain the property report or its equivalent required by federal or state law and read it before signing anything. No federal or state agency judged the merits or value, if any of this property. This promotional piece is not intended to constitute an offering in violation of the law of any jurisdiction.