

DESERT BUNGALOW #180



AT A GLANCE

Set between the striking desert landscape of Nevada's Red Rock Canyon and the glow of the Las Vegas Strip, The Summit Club is a distinctive, secure, luxury neighborhood in a class of its own. Located on 555 scenic and pristine acres in the heart of Summerlin, the community offers unparalleled real estate opportunities, a members-only Tom Fazio-designed championship golf course, an expansive clubhouse, and unfettered access to a stunning desert paradise. Sophisticated yet casual, private yet close to world-class dining and shopping, The Summit sets a new standard in luxury living.

THE COMMUNITY

- 150 Custom Homesites
- 95 high-end developer residences built by Discovery Builders
- 24-hour guard-gated entrance
- Minutes from the Las Vegas Strip and Red Rock Canyon Conservation Area

AMENITIES

- Tennis facility
- Basketball and Pickleball Courts
- On-Site Walking Trails
- Concierge Member Services
- The Clubhouse will be the center of life at The Summit, featuring a resort-style pool, full-service spa, salon and barbershop, kids' club and activity center, luxury indoor and outdoor dining, and so much more. Slated to open in 2022.

GOLF

- The 18-hole Tom Fazio-designed championship golf course is the only truly private course in Las Vegas.
- Home to several of Discovery Land Company's signature Comfort Stations
- Practice Facilities located steps away from the Golf House, a full-service culinary facility and member lounge

OUTDOOR PURSUITS

Discovery Land Company's bespoke lifestyle and recreation concierge program offers a selection of adventures in the great outdoors. The Summit Club offers prime access to Red Rock Canyon, Lake Mead and more of Southern Nevada's natural amenities.



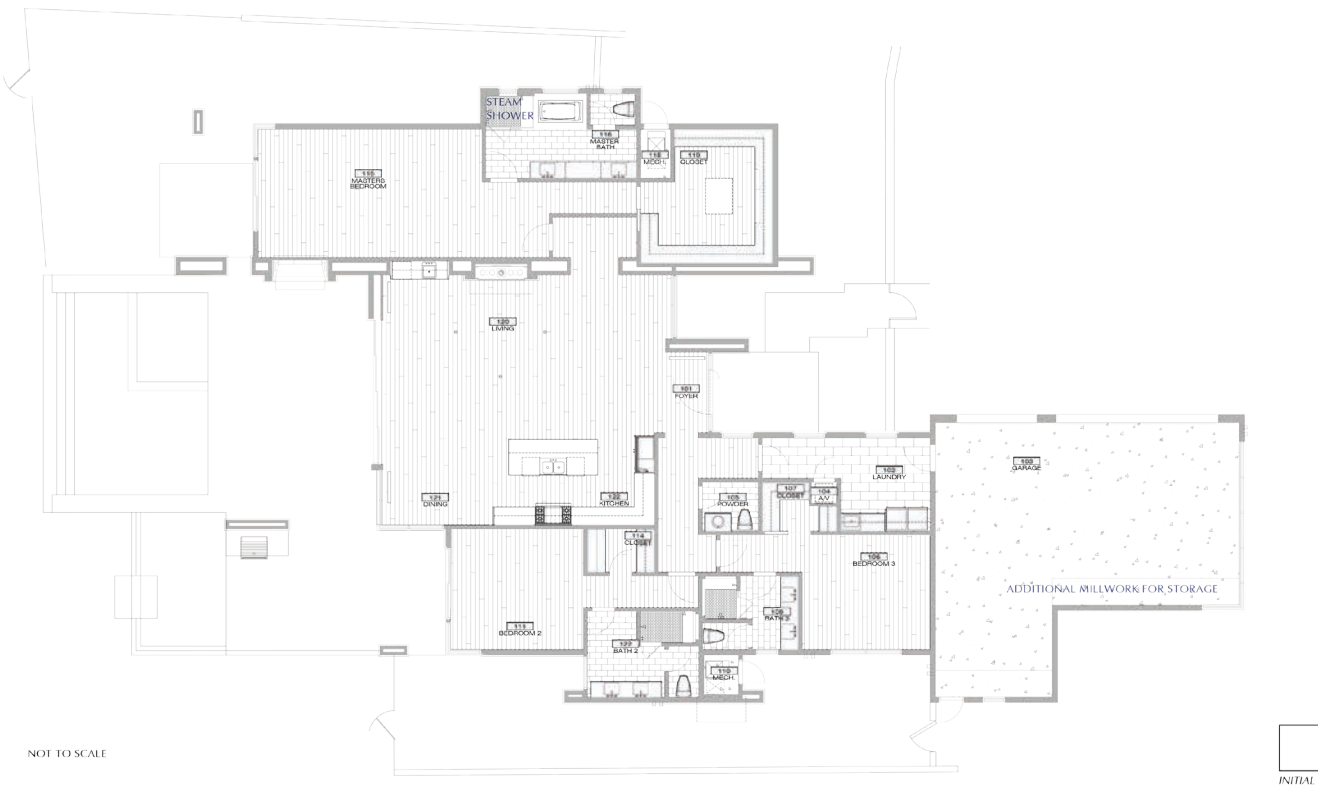
A PLACE TO CALL HOME

This three-bedroom, three-and-a-half bath Desert Bungalow is positioned with a prime view of the first fairway on The Summit's Tom Fazio-designed championship golf course, and southern mountain views over the pool and spa. Steps away from the heart of our club village, this home features convenient access to a wealth of amenities.



FLOORPLAN

DESERT
BUNGALOW #180



FINISH HIGHLIGHTS

Bright, light, and airy, the interior spaces take their design cues from the home’s contemporary architecture, which is beautifully complemented by natural materials like wood and stone and a subtle color palette. Among the bungalow’s luxurious appointments are flat-panel millwork and floating vanities, while Wolf and Sub-Zero appliances add elegance and ease to the kitchen. The exterior grill and refrigerator doors underscore Summit’s indoor-outdoor lifestyle.



ENTRY DOOR FINISH:
Natural Walnut

EXTERIOR STONE:
Sagewood

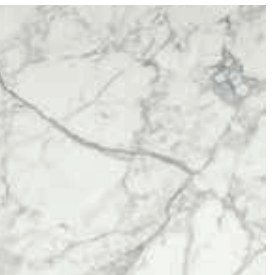
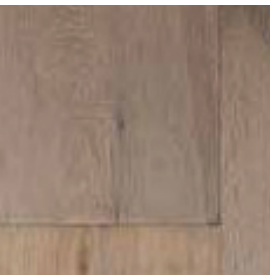
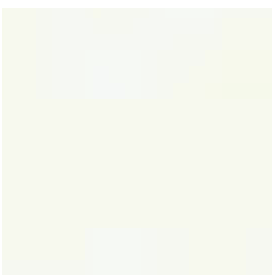
PAINT FINISH:
Cloud White (Eggshell / Benjamin Moore)

WOOD FLOOR:
Danube

KITCHEN STONE:
Statuary White

KITCHEN WOOD FINISH:
Wire Brushed Sandstone Rift White Oak

TONGUE AND GROOVE:
Natural Quarter Sawn Oak





THE SUMMIT CLUB
11750 SUMMIT CLUB DR
LAS VEGAS, NV 89135
SUMMITCLUBNV.COM
TEL (702) 970-2150