

GOLF COTTAGE | 3,700 SQUARE FEET, 3 BEDROOM

Indoor-outdoor living is the focus of the two-story, three-bedroom Golf Cottage. The main level of the 3,700-square-foot residence includes an extraordinary master suite and a great room open to the upper level, as well as generous space for entertaining on the wraparound covered patio. Two bedrooms and baths on the second story include patios and provide privacy for guests.



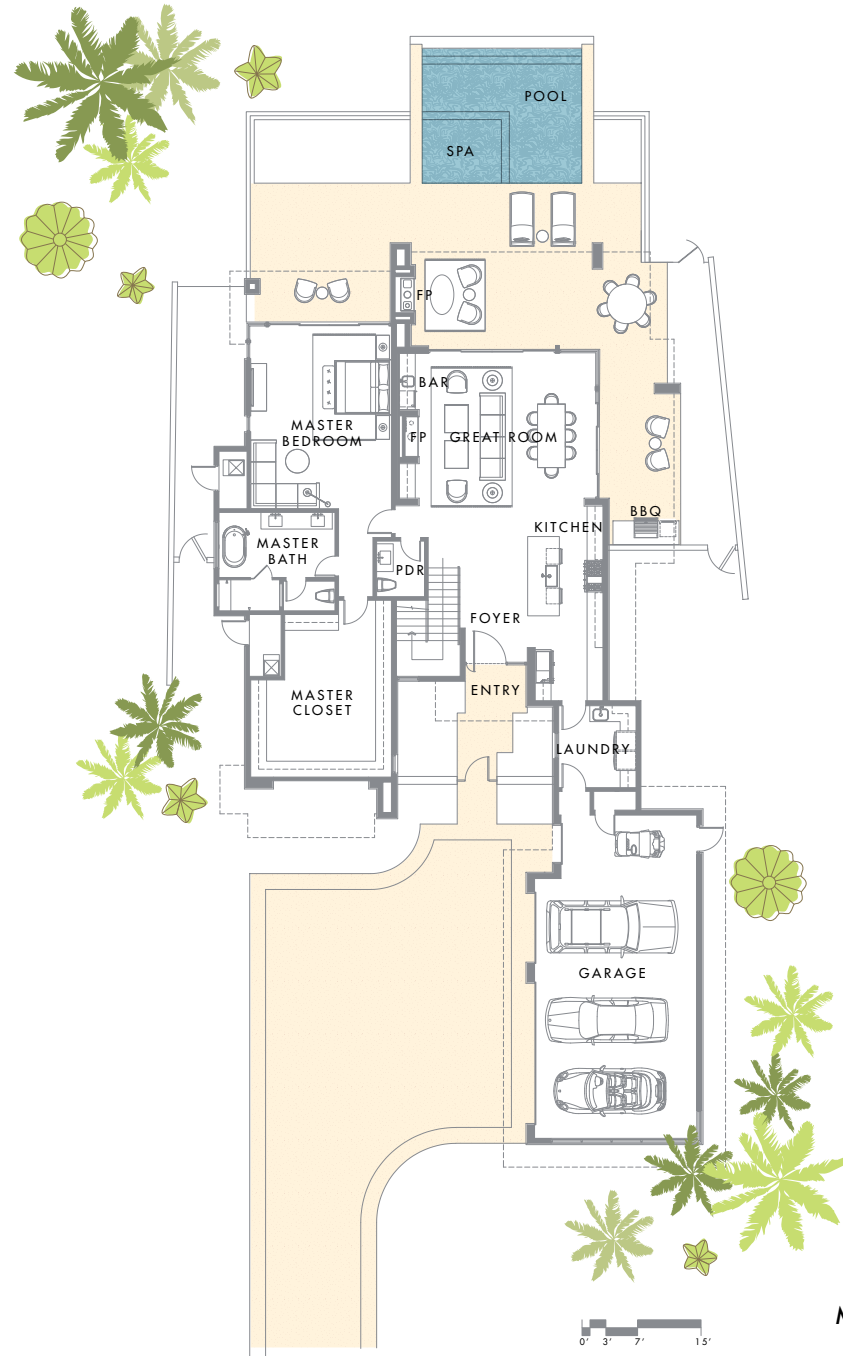
GOLF COTTAGE | 3,720 SQUARE FEET, 4 BEDROOM

The two-story, four-bedroom 3,720-square-foot Golf Cottage combines privacy and ease of entertaining indoors and out, with a large master suite on the main level, a great room open to the upper story, and a spacious covered patio with an outdoor fireplace and a lounge area by the pool and spa. Private guest quarters occupy the upper level, where two of the three bedrooms include private patios.

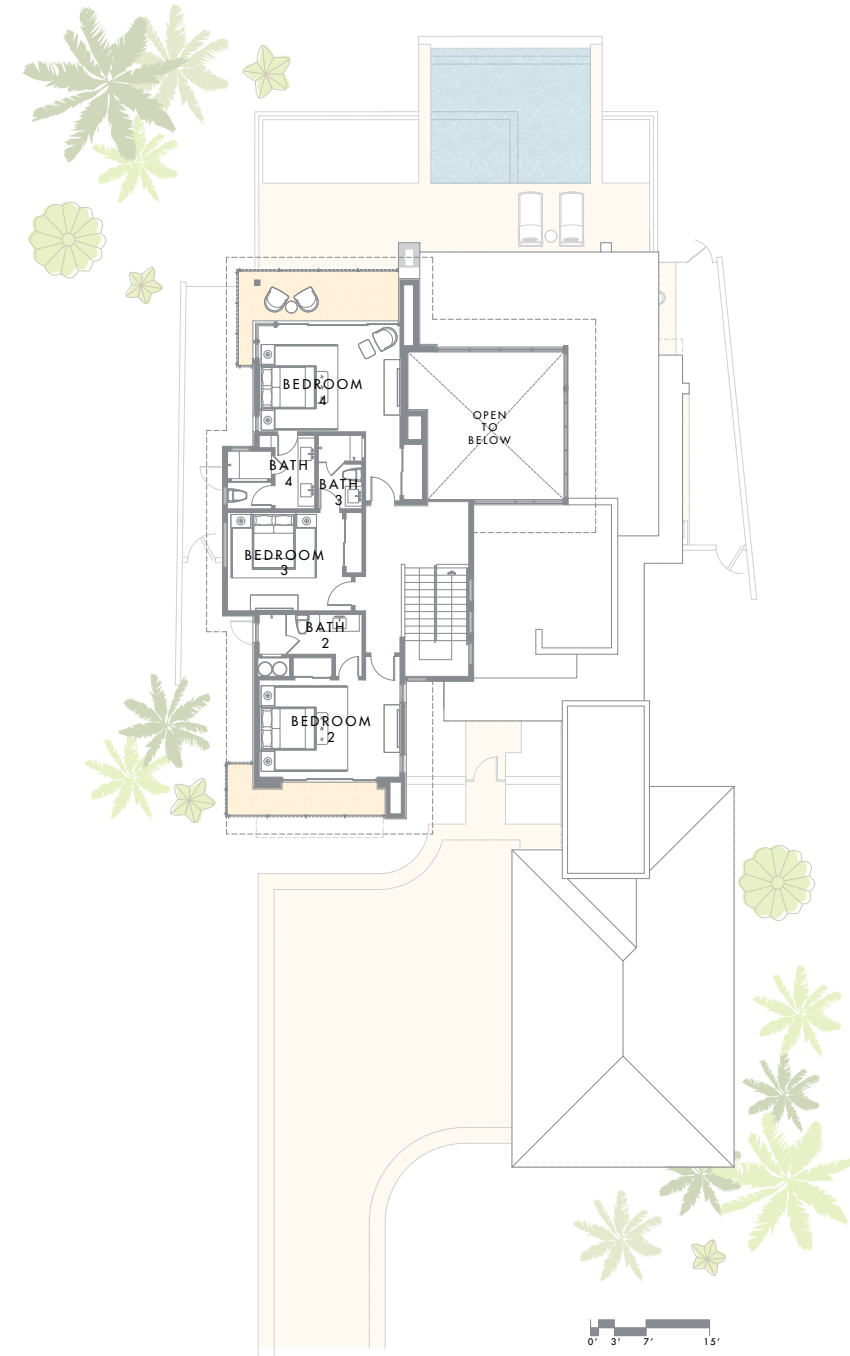


FLOOR PLAN

| | |
|------------------|----------|
| Total SQ Footage | 3,720 SF |
| Main Level | 2,440 SF |
| Upper Level | 1,280 SF |
| Bedrooms | 4 |
| Bathrooms | 4.5 |



MAIN LEVEL



UPPER LEVEL

This is a standard representation; some units will have a mirrored plan due to homesite configuration. Room and patio dimensions and total square footage are for general reference, sizes will be specific to each unit and subject to change.



CONTACT

T +1.702.970.2150

E info@summitclubnv.com

THE SUMMIT CLUB

10775 Summit Club Drive

Las Vegas, NV 89135



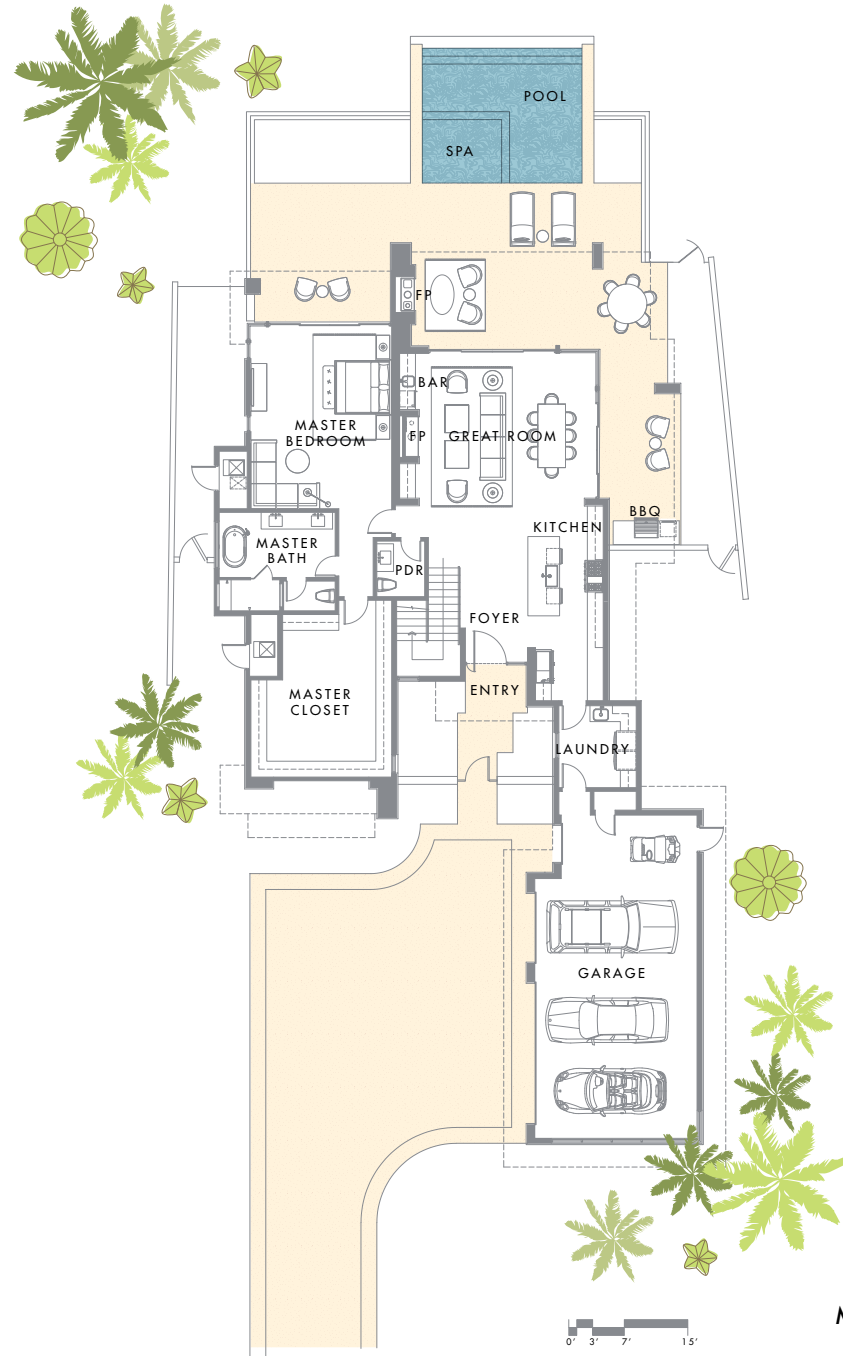
These materials, square footage, features and amenities described and depicted herein are based upon current development plans, which are subject to change without notice. Renderings reflect sample fixtures and finishes, which can be personalized for final construction; inquire with your sales representative for more information. Obtain the property report required by applicable government authorities before signing anything. No governmental agency has judged the merits or value, if any, of this property. This material shall not constitute an offer to sell in any state where prior registration is required.

August/19

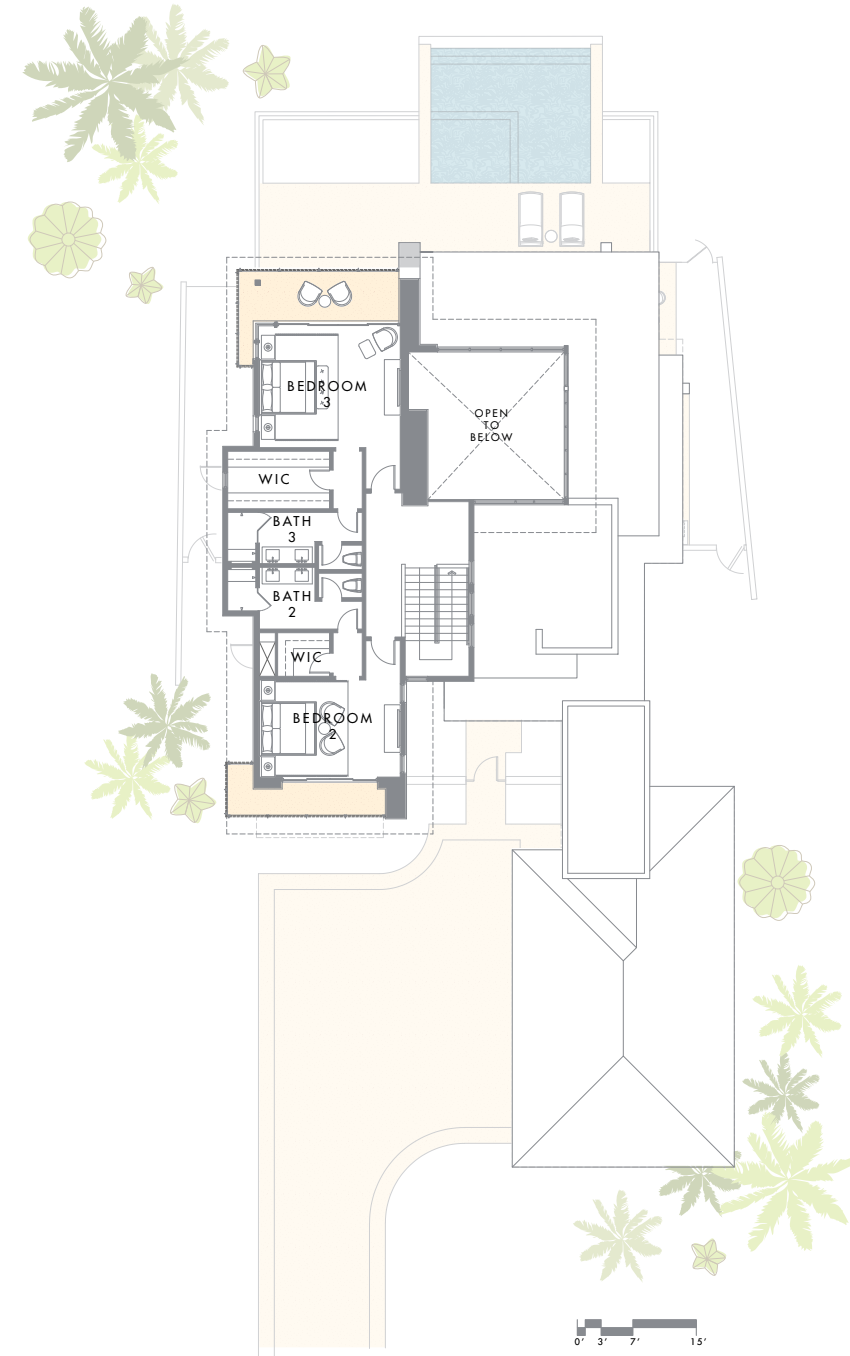
THE SUMMIT CLUB

FLOOR PLAN

| | |
|------------------|----------|
| Total SQ Footage | 3,700 SF |
| Main Level | 2,440 SF |
| Upper Level | 1,260 SF |
| Bedrooms | 3 |
| Bathrooms | 3.5 |



MAIN LEVEL



UPPER LEVEL

This is a standard representation; some units will have a mirrored plan and/or detached garage due to homesite configuration. Room and patio dimensions and total square footage are for general reference, sizes will be specific to each unit and subject to change.



CONTACT

T +1.702.970.2150

E info@summitclubnv.com

THE SUMMIT CLUB

10775 Summit Club Drive

Las Vegas, NV 89135



These materials, square footage, features and amenities described and depicted herein are based upon current development plans, which are subject to change without notice. Renderings reflect sample fixtures and finishes, which can be personalized for final construction; inquire with your sales representative for more information. Obtain the property report required by applicable government authorities before signing anything. No governmental agency has judged the merits or value, if any, of this property. This material shall not constitute an offer to sell in any state where prior registration is required.

August/19

THE SUMMIT CLUB