

**CLUB VILLA | 5,650 SQUARE FEET, 5 BEDROOM**

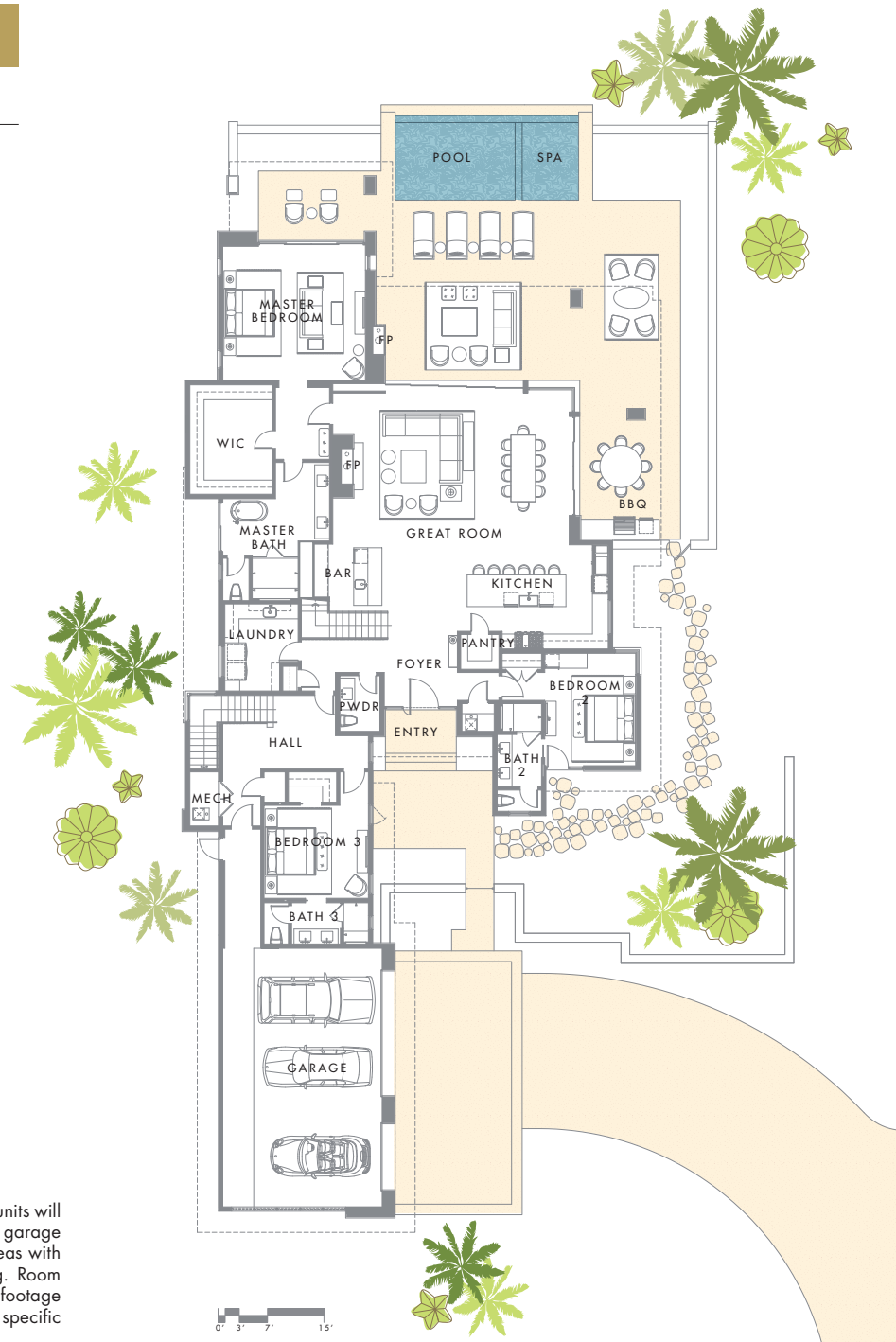


With five bedrooms—including one with private access—the capacious two-story Club Villa is perfect for a multi-generational family or a vacation retreat. The 5,650-square-foot residence includes an extensive patio with dining and lounging areas as well as a pool and spa. At the heart of the home is the great room, with a ceiling that rises to the upper story. This is a place to truly enjoy The Summit Club's indoor-outdoor lifestyle.

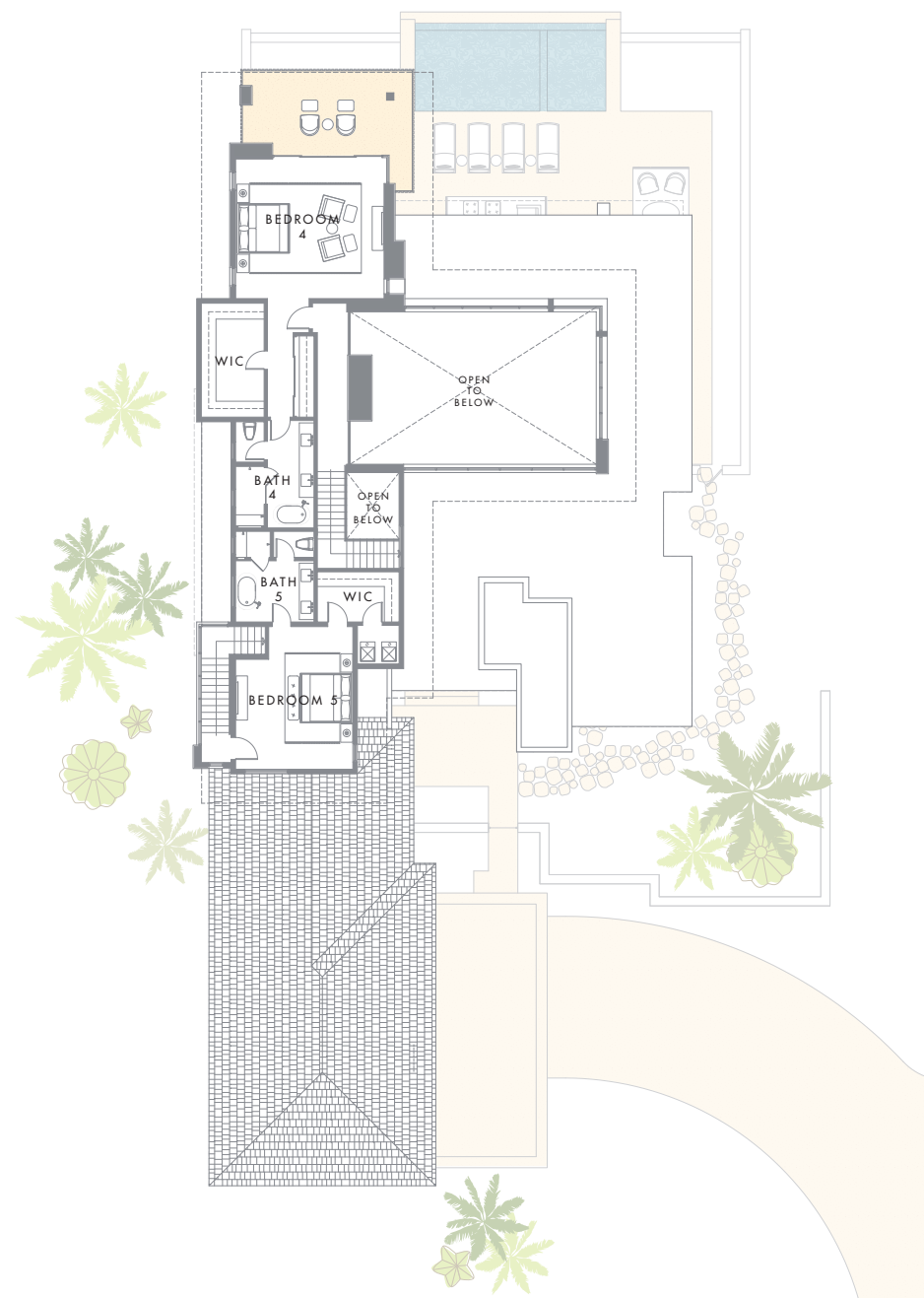


# FLOOR PLAN

Total SQ Footage	5,650 SF
Main Level	4,015 SF
Upper Level	1,635 SF
Bedrooms	5
Bathrooms	5.5



MAIN LEVEL



UPPER LEVEL

This is a standard representation; some units will have a mirrored plan and/or detached garage due to homesite configuration. Patio areas with dotted lines denote overhead covering. Room and patio dimensions and total square footage are for general reference; sizes will be specific to each unit and are subject to change.



## SALES OFFICE

T +1.702.970.2207

E info@summitclubnv.com

## THE SUMMIT CLUB

11750 Summit Club Drive

Las Vegas, NV 89135



These materials, square footage, features and amenities described and depicted herein are based upon current development plans, which are subject to change without notice. Renderings reflect sample fixtures and finishes, which can be personalized for final construction; inquire with your sales representative for more information. Obtain the property report required by applicable government authorities before signing anything. No governmental agency has judged the merits or value, if any, of this property. This material shall not constitute an offer to sell in any state where prior registration is required.

May/20

THE SUMMIT CLUB

CLUB VILLA | 6,139 SQUARE FEET, 5 BEDROOM, 5.5 BATHROOM  
 OPTIONAL FLOORPLAN

FLOOR PLAN

Total SQ Footage	6,136 SF
Main Level	4,239 SF
Upper Level	1,900 SF
Bedrooms	5
Bathrooms	5.5



MAIN LEVEL

UPPER LEVEL

This is a standard representation; some units will have a mirrored plan and/or detached garage due to homesite configuration. Patio areas with dotted lines denote overhead covering. Room and patio dimensions and total square footage are for general reference; sizes will be specific to each unit and are subject to change. Additional options include elevator, fireplace in the master bedroom and an outdoor shower.



**CLUB VILLA | 6,946 SQUARE FEET, 5 BEDROOM, 5 BATHROOM, 2 HALF BATHROOM**  
**OPTIONAL FLOORPLAN**

**FLOOR PLAN**

<b>Total SQ Footage</b>	<b>6,946 SF</b>
<b>Main Level</b>	<b>4,239 SF</b>
<b>Upper Level</b>	<b>2,707 SF</b>
<b>Bedrooms</b>	<b>5</b>
<b>Bathrooms</b>	<b>5</b>
<b>Half Bathrooms</b>	<b>2</b>



**MAIN LEVEL**

**UPPER LEVEL**

This is a standard representation; some units will have a mirrored plan and/or detached garage due to homesite configuration. Patio areas with dotted lines denote overhead covering. Room and patio dimensions and total square footage are for general reference; sizes will be specific to each unit and are subject to change. Additional options include elevator, fireplace in the master bedroom and an outdoor shower.

